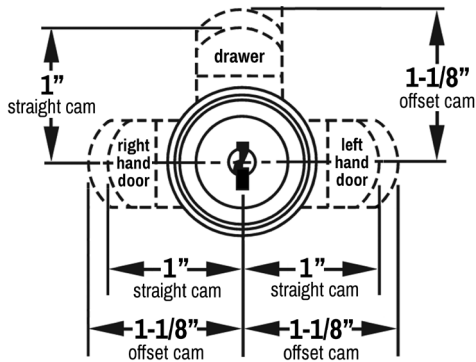


Cascade Series Cams



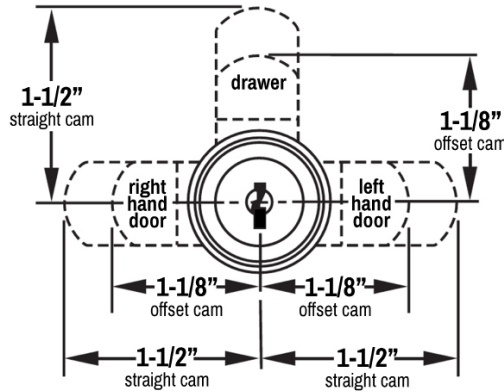
For use with: 951, 952, 953, 954, 955, 960 and 961 Cam Locks

951-952: Front of lock with P95-CM-6 and P95-CM-2 included cams.



Dimensional offset of 1-1/8" cam is 11/32"

953-961: Front of lock with P95-CM-1 and P95-CM-2 included cams.



Dimensional offset of 1-1/8" cam is 11/32"

Included Cams

The 951 and 952 cam locks ship standard with the P95-CM-6 (Straight) and P95-CM-2 (Offset) cams. 953, 954, 955, 960, and 961 cam locks ship standard with the P95-CM-1 (Straight) and P95-CM-2 (Offset) cams. Reversible: All offset cams are reversible and can be used in either the inbent or outbent position.

Straight Cams

Part No.	Dim. A [length]	Description
P95-CM-1 **	1-1/2"	Straight cam
P95-CM-3	3"	Straight cam
P95-CM-5	1-1/2"	Straight hook cam
P95-CM-6 **	1"	Straight cam
P95-CM-7	5/8"	Straight cam

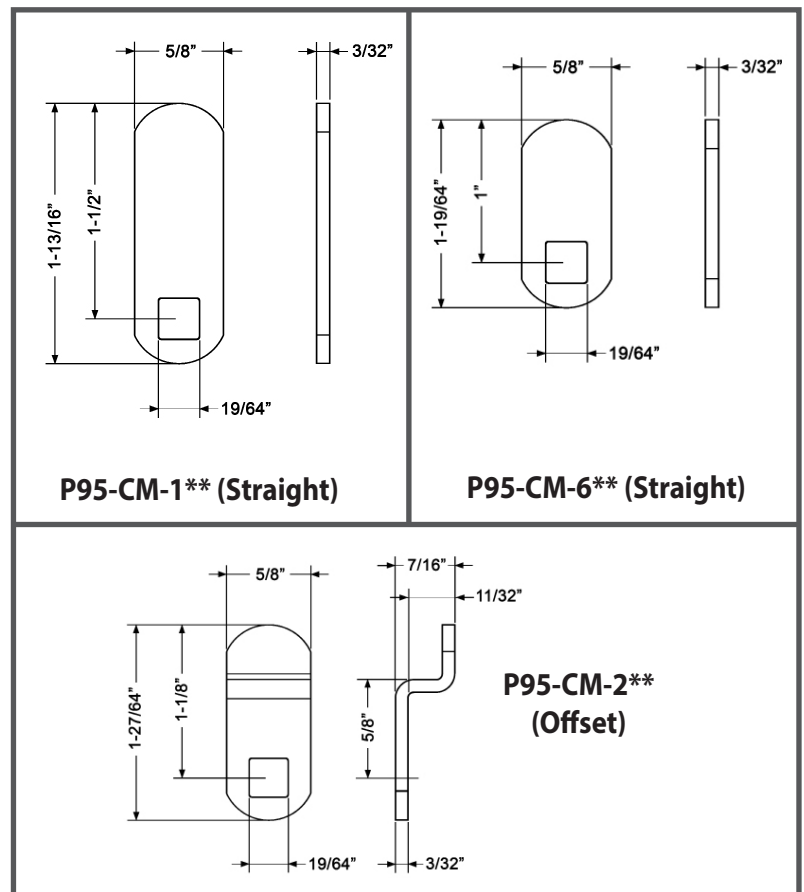
Offset Cams

Part No.	Dim. A [length]	Dim. B [offset]	Description
P95-CM-2 **	1-1/8"	11/32"	Offset cam
P95-CM-4	1-5/8"	5/16"	Offset cam

**P95-CM-6 and P95-CM-2 are included standard with 951-952 locks. P95-CM-1 and P95-CM-2 are included standard with 953-961 locks. All other cams are available separately.

Optional Cams (Page 2)

See page 2 for detailed dimensional drawings of P95-CM-3, P95-CM-4, P95-CM-5, and P95-CM-6 optional cams.



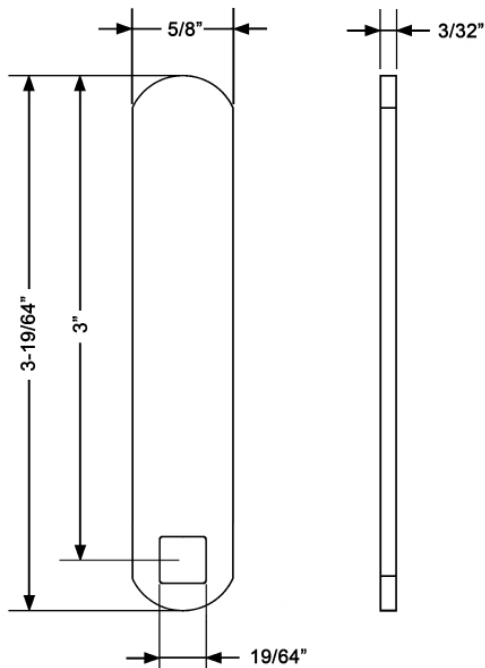
WARNING: This product can expose you to chemicals including chromium, which is known to the State of California to cause cancer and birth defects or other reproductive harm. For more information go to www.P65Warnings.ca.gov.



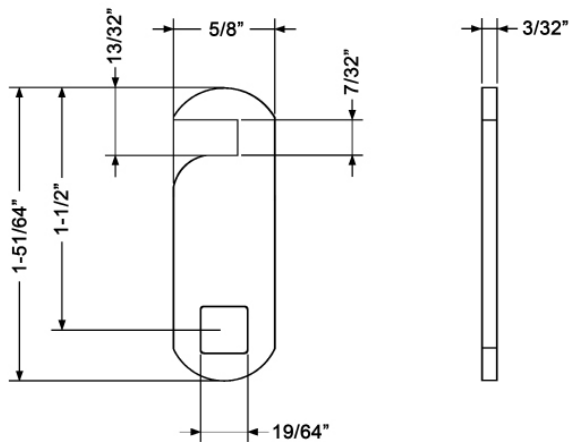
OLYMPUS[®] LOCK^{INC}

Cascade Series Optional Cams

For use with: 951, 952, 953, 954, 955, 960, and 961 Cam Locks

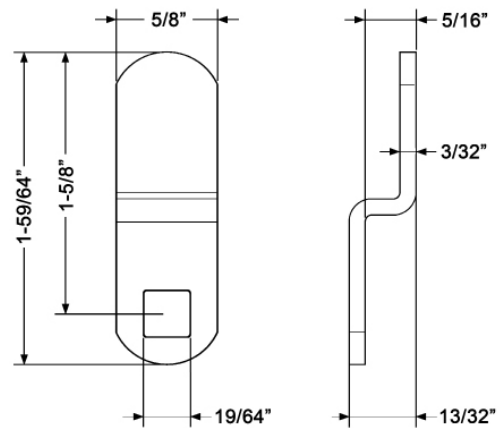


P95-CM-3 (Straight)

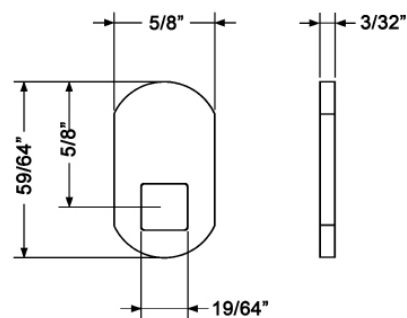


P95-CM-5 (Straight/Hook)

Reversible: All offset cams are reversible and can be used in either the inbent or outbent position.



P95-CM-4 (Offset)



P95-CM-7 (Straight)