

CRB200 SERIES

Boxed Brass Padlocks for Corbin / Russwin IC Cylinders

SPECIFICATIONS

Body: Extruded brass
Locking: Ball bearing heel and toe
Body width: 2"
Body height: 2"
Shackle: Stainless steel
Finish: BHMA 606 Satin Brass (US4)

CYLINDER INFORMATION

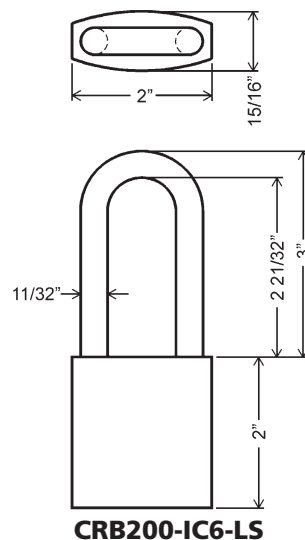
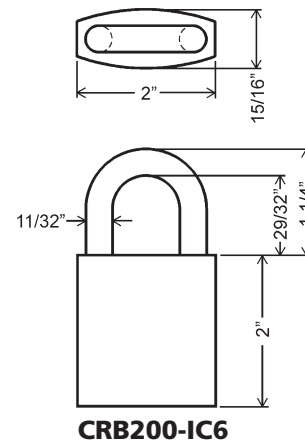
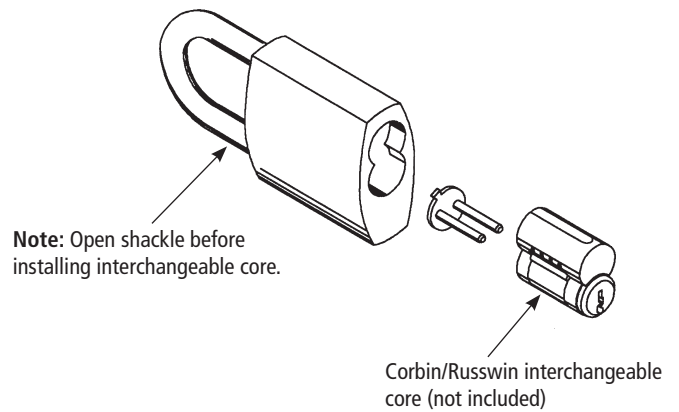
Cores: Not included
Accepts: Corbin/Russwin 6-pin
interchangeable core cylinders
Standard function: Key removable in
locked or unlocked position

REGULAR SHACKLE

Shackle opening: 29/32"
Packed: Each
Weight each: 0.68 lbs.

LONG SHACKLE

Shackle opening: 2-21/32"
Packed: Each
Weight each: 0.78 lbs.



Part #	Shackle
CRB200-IC6	Regular
CRB200-IC6-LS	Long



WARNING: This product can expose you to chemicals including chromium, which is known to the State of California to cause cancer and birth defects or other reproductive harm. For more information go to www.P65Warnings.ca.gov.



OLYMPUS[®]
LOCK
INC