

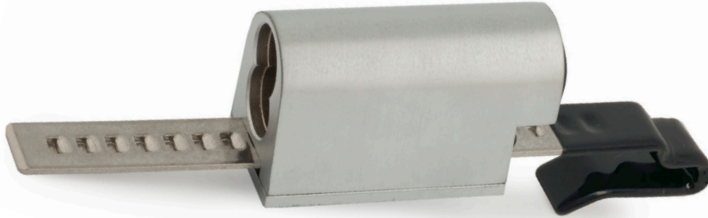


729R

SFIC: Showcase, Ratchet Lock

PRODUCT DATA SHEET

Compiles with clause 6.3 (8.2~8.4) of ANSI/BHMA A156.11 ANSI standards



US26D Finish

SPECIFICATIONS

Retrofits: Best 3S

ANSI/BHMA: Complies with clause 6.3 (8.2~8.4) of ANSI/BHMA A156.11 ANSI standards

Use: Sliding glass or wood doors

Body: Zinc die cast

Strap: Steel

Finish: US26D

Packaged: Packed 10 per box

Cylinder Information

Cores: Not included

Accepts: Best, Arrow, Falcon, KSP, Schlage SFIC, or equivalent small format interchangeable cores

Compatible Electronic Cylinders: Medeco Nexgen XT or VIDEX CyberLock SFIC cylinders

Included Accessories

729RS-1 strap for 3/16" to 1/4" material thickness

725-1 spacer to fit 6 or 7 cores

725-PA plastic thumbturn

Optional Accessories

Alternate Straps:

729RS-2 strap for up to 3/8" material thickness

729RS-3 strap for up to 5/8" material thickness

SFIC Cores: 206/207 Series



For BEST style interchangeable core cylinders


Included Accessories



725-PA



725-1

 **WARNING:** This product can expose you to chemicals including chromium, which is known to the State of California to cause cancer and birth defects or other reproductive harm. For more information go to www.P65Warnings.ca.gov.

206-363-3290 | 800-525-0954

www.olympuslock.com

© 2025 Olympus Lock, Inc.



OLYMPUS[®]
LOCK^{INC.}



729R

SFIC: Showcase, Ratchet
Lock

PRODUCT DATA SHEET

Compiles with clause 6.3 (8.2~8.4) of
ANSI/BHMA A156.11 ANSI standards

Optional Accessories

See our website for a complete list of optional components.

206/207 Series

- 206 Series 6-pin SFIC cylinder
- 207 Series 7-pin SFIC cylinder



BEST compatible
interchangeable
core cylinders

Available Keyways

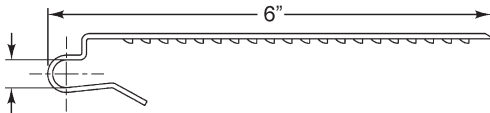
A	B	C	D	E	F	G	H	
J	K	L	M	Q	1C	1D	KMT300	

Alternate straps (available separately)

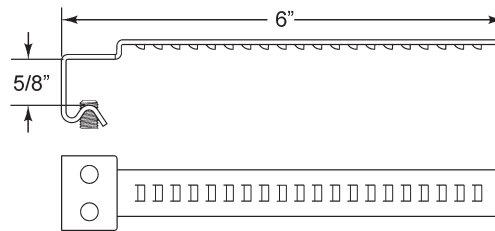
All straps are 6" in length.

- 729RS-2 strap for 3/8" material thickness
- 729RS-3 strap for up to 5/8" material thickness

729RS-2 strap for 3/8" material



729RS-3 adjustable strap for 3/8" to 5/8" material



Dimensions

Dimensions are the same for all handings.

Typical Installation

