

100M | 200M

N Series: Non-Ferrous MRI Deadbolt Door & Drawer Cabinet Locks

ANSI/BHMA Grade 1
E07121 | E07041

For use in medical
MRI applications

SPECIFICATIONS

Keying: Can be keyed together with other N Series locks

Non-magnetic: Contains all non-ferrous (non-magnetic) components and keys. Suitable for use in MRI (magnetic resonance imaging) applications. Includes copper plated non-magnetic keys.

Rekeyable: Easily rekeyable via set screw cylinder release mechanism

ANSI/BHMA: Passed ANSI/BHMA A156.11 Grade 1 performance requirements. Equivalent to E07121(100M) / E07041(200M).

Standard function: Key removable in locked or unlocked position. Standard function locks are non-handed.

Key-retaining: Key removable in locked position only. Specify handing (KL/KR for doors or KI/KV for drawers) when ordering.

Long bolt: Extends bolt 3/4" on both ends. Specify -LB option when ordering.

Standard locks: See our 100DR/200DW products

US Patent Nos: 4,899,563; 4,920,774

Body: Zinc die cast

Cylinder: Solid brass, pin tumbler

Cylinder length 100M: 15/16" or 1-3/8"

Cylinder length 200M: 15/16", 1-3/8" or 1-5/8"

Barrel diameter: 7/8"

Finish: US26D

Packaged: Packed 10 per box

KEYING INFORMATION

Keyway: N Series (equivalent to National D4291 4-pin or D4292 5-pin system)

Keys: Includes 2 keys per lock

Stock keying: KD/KA - 4 pin standard

Stock KA#: 101, 103, 107, 915, 51001, 51002, 51003, 51004

Masterkeyed: 5 pin standard

Grand masterkeyed: Available

Keyblank 5-pin copper plated: KBN-5B (use with 100M/200M MRI locks)

INCLUDED ACCESSORIES

100M: 2 keys, 56-1 bar strike, and lock mounting screws

200M: 2 keys, 56-1 bar strike, and lock mounting screws

OPTIONAL ACCESSORIES

Spacers: WP20 (3/16" thick), WP21 (3/32" thick), WP22 (1/4" thick), WP23 (1/2" thick)

Trim collars: TR1256

Through-bolt hardware: ETS2 through-bolt plate, ETS2-PL trim pull and ETST2 template

Extended (long) bolt: 15-1-35 (for use with 100M or 200M)



US26D finish



56-1



Includes copper plated non-magnetic keys.



With long-bolt option

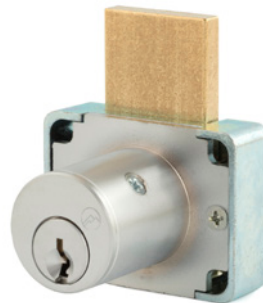
100M

Function: Cabinet door lock

ANSI/BHMA No. E07121

Barrel length: 15/16" or 1-3/8"

Extended bolt: Extends overall bolt length by 1-1/2". Specify -LB option at time of order.



US26D finish



56-1



Includes copper plated non-magnetic keys.



With long-bolt option

200M

Function: Drawer lock

ANSI/BHMA No. E07041

Barrel length: 15/16", 1-3/8" or 1-5/8"

Extended bolt: Specify -LB option at time of order.



WARNING: This product can expose you to chemicals including chromium, which is known to the State of California to cause cancer and birth defects or other reproductive harm. For more information go to www.P65Warnings.ca.gov.



OLYMPUS
LOCK

100M | 200M

N Series: Non-Ferrous MRI Deadbolt Door & Drawer Cabinet Locks

**ANSI/BHMA Grade 1
E07121 | E07041
For use in medical
MRI applications**

OPTIONAL ACCESSORIES - See our website for a complete list of optional components.

Internal plastic spacers

- WP20 3/16" thick plastic spacer
- WP21 3/32" thick plastic spacer
- WP22 1/4" thick plastic spacer
- WP23 1/2" thick plastic spacer

Strikes

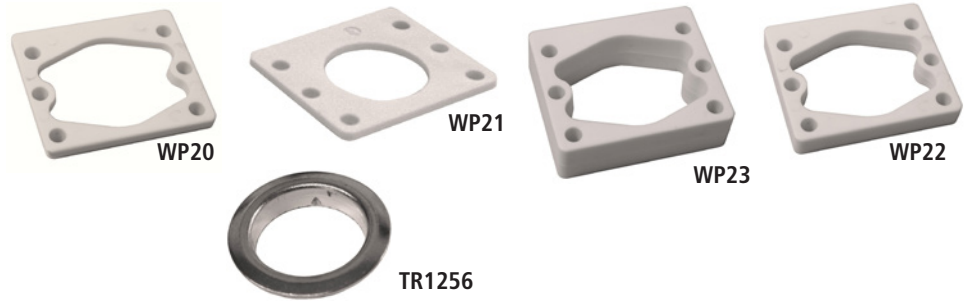
- 07S, 12-1, 12-2, 12-3, 12-4, 12-5, 56-1

Trim Ring

- TR1256 trim ring

Extended bolt

- 15-1-35 (see below for installed dimensions)



Through-bolt plate

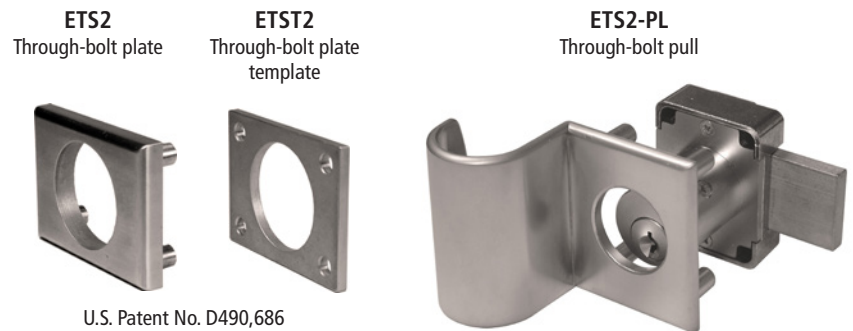
External metal 1/8" or 1/4" through-bolt plate allows for an attractive flush mounting of the cabinet lock face. Available in US3 or US26D finish.

- ETS2-125 through-bolt plate, 1/8" thick
- ETS2-250 through-bolt plate, 1/4" thick

Through-bolt plate template

Allows for proper mounting hole placement of through-bolt plate. Can be used as a 1/8" shim spacer. Available in US3 and US26D finish.

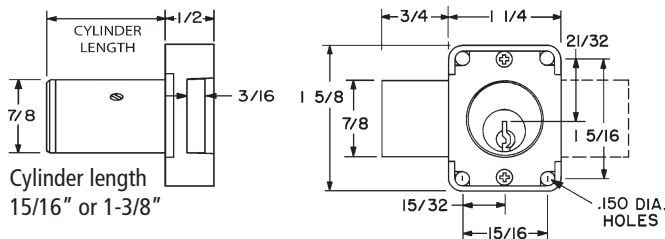
- ETST2 through-bolt plate template



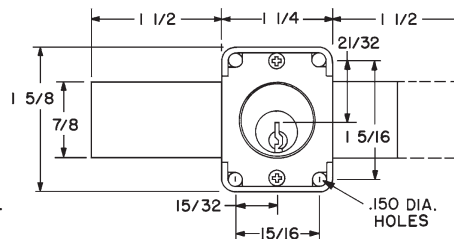
U.S. Patent No. D490,686

DIMENSIONS

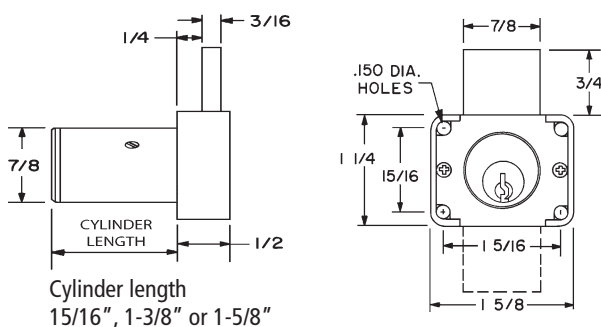
100M Cabinet Door Lock



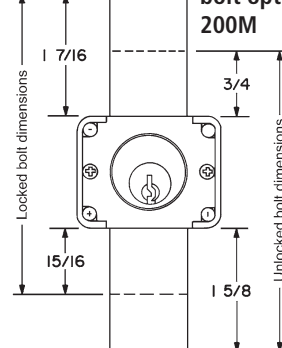
Extended (long) bolt option for 100M



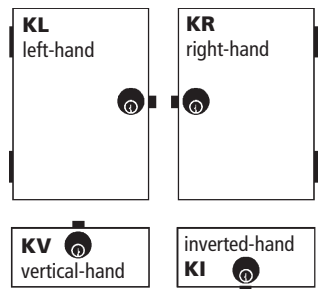
200M Drawer Lock



Extended (long) bolt option for 200M



Key-Retaining Handing Chart



Handing information is only required for key-retaining function. Standard function locks are non-handed.