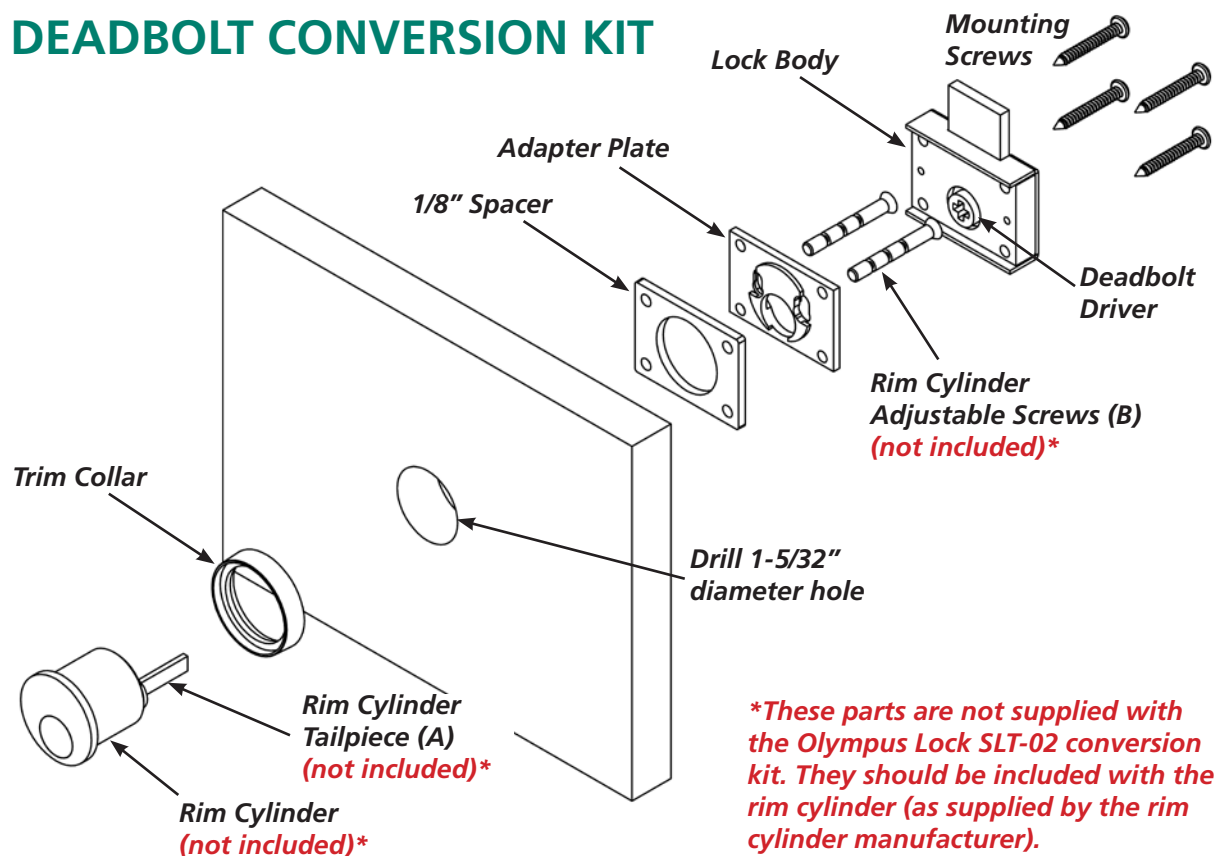


## DEADBOLT CONVERSION KIT

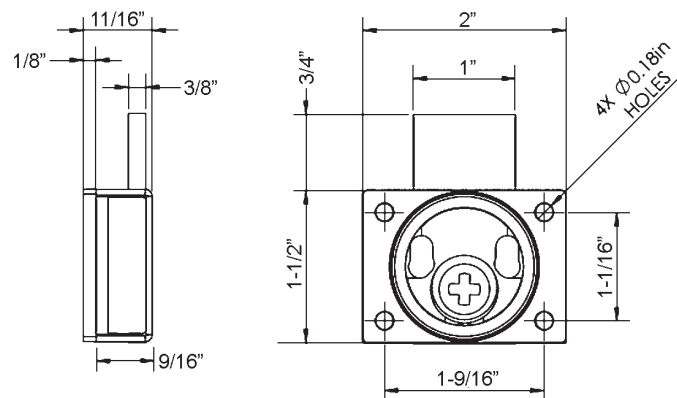


### Included Accessories:

Trim collar, 1/8" plastic spacer, adapter plate, lock body, deadbolt driver, mounting screws, 1/4" plastic bar strike.

### Optional Accessories:

Plastic spacers: 1/8", 1/4" or 1/2", and assorted bar and angle strikes. (See [www.olympuslock.com](http://www.olympuslock.com) for details on all optional accessories).



## INSTALLATION STEPS

- Step 1.** Determine where the lock will be located, then drill a 1-5/32" diameter hole for insertion of the *Rim Cylinder*. You may elect to drill pilot holes for the lock *Mounting Screws* at this time as well.
- Step 2.** Insert the *Rim Cylinder* through the *Trim Collar*, then through the hole created in **Step 1**.
- Step 3.** Determine if you will be using the supplied 1/8" *Spacer* or any of our other optional spacers.
- Step 4.** Hold the *Adapter Plate* and *Spacer* (if applicable) into place, then trim the *Rim Cylinder Adjustable Screws (B)* and *Rim Cylinder Tailpiece (A)* as required for a secure fit. The *Rim Cylinder Tailpiece (A)* should fit securely into the plus + shaped receiver of the *Deadbolt Driver* within in the *Lock Body*, but should not be so long that it protrudes all the way through the + shape and interferes with the smooth movement of the bolt when turning the key.
- Step 5.** Secure the *Rim Cylinder*, *Trim Collar*, *Spacer* (if applicable) and *Adapter Plate* into place using the *Rim Cylinder Adjustable Screws* modified to the correct length in **Step 4**.
- Step 6.** Fit the *Lock Body* onto the back of the cabinet so the *Rim Cylinder Tailpiece* (trimmed earlier in **Step 4**) fits into the + shaped receiver of the *Deadbolt Driver* within the *Lock Body*. Secure into place with the supplied *Mounting Screws*.
- Step 7.** Install bar strike (not shown) where applicable.

**Note:** Varying material thicknesses can be accommodated by modifying the length of the *Rim Cylinder Tailpiece (A)* and *Adjustable Screws (B)* which are included standard in the *Rim Cylinder* package, and using or not using the supplied 1/8" *Spacer*. (Additional spacers are available separately. (See [www.olympuslock.com](http://www.olympuslock.com) for details.)