

# Interchangeable Core

Best Compatible (Small Format)

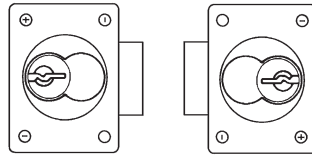
## ► L72V Latch Lock



For BEST style interchangeable core cylinders



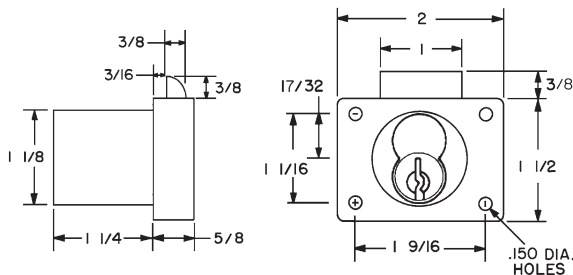
For door applications, place lock on side.



Left-Hand Door

Right-Hand Door

Item	Handing	Finish	Cyl. length	Keying
L72V	VH Drawer	26D, US3	1-1/4"	Lock body - For small format IC
L72V-SP1	VH Drawer	26D, US3	1-1/4"	Lock body - For Sargent XC or Marks high security cores with side pins. Includes short pin prong driver no. L72V-PD-SP1.



## SPECIFICATIONS

**Function:** Spring latch  
**Body:** Zinc die cast  
**Barrel diameter:** 1-1/8"  
**Cylinder length:** 1-1/4"  
**Latch projection:** 3/8"  
**Finish:** 26D or US3  
**Packaged:** Packed 10 per box

## KEYING INFORMATION

**Cores:** Not included  
**Accepts:** Best, Arrow, Falcon, KSP, Schlage SFIC or equivalent small format interchangeable cores  
**Compatible electronic cylinders:** Medeco Nexgen XT or VIDEX CyberLock SFIC cylinders

## INCLUDED ACCESSORIES

10-350 spacers (qty 3)  
 L78ST-1-SS matching lip strike  
 725-1 spacer to fit 6 or 7 pin cores  
 725-PA plastic thumbturn

## OPTIONAL ACCESSORIES

See the accessories section of this catalog for a complete list.

**Prong drivers:** Shortened prong driver for use with Sargent XC or Marks high security cores with side pins. Specify L72V-PD-SP1 (for prong driver only).

**Spacers:** 10-350 (1/8" thick), 10-348 (1/4" thick), 10-349 (1/2" thick)

**Trim ring:** TR78

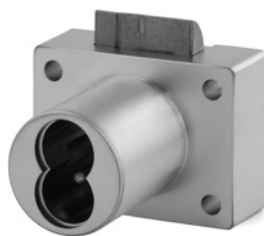
**Through-bolt hardware:** ETS1 trim plate, ETS1-PL trim pull and ETST1 template

**SFIC cores:** 206/207 Series (page 64)

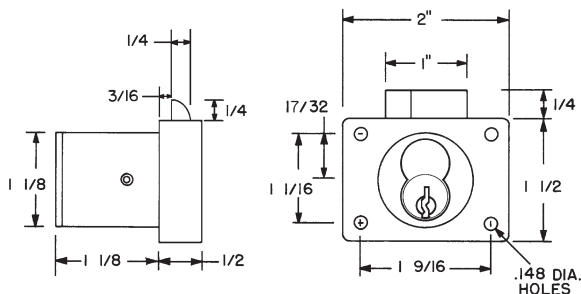
## ► 950 Deadlatching Lock



For BEST style interchangeable core cylinders



Item	Handing	Finish	Cyl. length	Description
950IC	VH Drawer	26D	1-1/8"	Lock body - For small format IC



## SPECIFICATIONS

**Function:** Deadlocking latch  
**U.S. Patent No:** 4,899,563; 4,922,774; 5,657,652  
**Body:** Zinc die cast  
**Cylinder length:** 1-1/8"  
**Barrel diameter:** 1-1/8"  
**Latch projection:** 1/4"  
**Finish:** 26D  
**Packaged:** Packed 10 per box

## KEYING INFORMATION

**Cores:** Not included.  
**Accepts:** Best, Arrow, Falcon, KSP, Schlage SFIC or equivalent small format interchangeable cores  
**Compatible electronic cylinders:** Medeco Nexgen XT or VIDEX CyberLock SFIC cylinders

## INCLUDED ACCESSORIES

10-350 spacers (qty 2)  
 725-1 spacer to fit 6 or 7 pin cores  
 850-210 matching strike  
 725-PA plastic thumbturn

## OPTIONAL ACCESSORIES

See the accessories section for a complete list.

**Spacers:** 10-350 (1/8" thick), 10-348 (1/4" thick), 10-349 (1/2" thick)

**Trim ring:** TR78

**Through-bolt hardware:** ETS1 trim plate, ETS1-PL trim pull and ETST1 template

**SFIC cores:** 206/207 Series (page 64)



**OLYMPUS LOCK**

Tel: 206.362.3290 | 800.525.0954  
 Fax 206.362.3569 | www.olympuslock.com



The following warning is applicable to all parts listed on this page:  
**WARNING:** This product can expose you to chemicals including chromium, which is known to the State of California to cause cancer and birth defects or other reproductive harm. for more information go to www.P65Warnings.ca.gov.