

# Interchangeable Core

Best Compatible (Small Format)

## ► 720B-DM Medical Cart Direct Drive Cam Lock

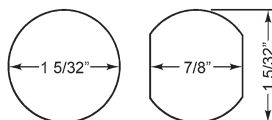
See also page 46:  
724VR Medical Cart/  
File Cabinet lock



For BEST style  
interchangeable  
core cylinders



### MOUNTING CUTOUT



TR201  
1/8"



TR202  
1/4"

Item	Finish	Body	Cyl. Diameter	Mat. Thickness	Description
720B-DM	26D	Machined solid brass	1-1/8"	Up to 1-1/8"	Lock body - For small format IC

## SPECIFICATIONS

Retrofits: Best 1E7D4

Cams: Will work with Best original cams

Cylinder diameter: 1-1/8"

Across flats: 7/8"

Max. material thickness: 1-1/8"

Min. material thickness: 0.08"

Functions: Direct drive screw on cam mechanism

Handing: LH or RH key-retaining only

Body: Solid machined brass

Finish: 26D

Packaged: Packed 10 per box

## KEYING INFORMATION

Cores: Not included.

Accepts: Best, Arrow, Falcon, KSP, Schlage SFIC or equivalent small format interchangeable cores

Compatible electronic cylinders: Medeco Nexgen XT or VIDEX CyberLock SFIC cylinders

## INCLUDED ACCESSORIES

725-PA plastic thumbturn

720-3-D1 short direct drive cam

TR201 spacer collar, 1/8"

TR202 spacer collar, 1/4"

725-1 spacer for 6 pin cores

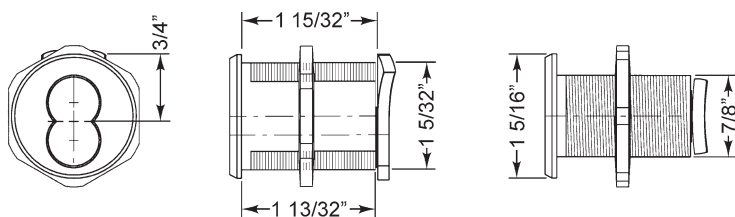
## OPTIONAL ACCESSORIES

Cam: 720-3-SC1

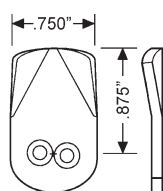
Trim collars: TR200 Series

CL-MP-118: Double-D metal punch (page 70)

SFIC cores: 206/207 Series (page 64)

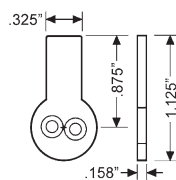


### INCLUDED CAM



**720-3-D1**  
short cam

### OPTIONAL CAM



**720-3-SC1**  
switch cam



**OLYMPUS**  
**LOCK**

Tel: 206.362.3290 | 800.525.0954  
Fax 206.362.3569 | www.olympuslock.com



The following warning is applicable to all parts listed on this page:  
**WARNING:** This product can expose you to chemicals including chromium, which is known to the State of California to cause cancer and birth defects or other reproductive harm. for more information go to [www.P65Warnings.ca.gov](http://www.P65Warnings.ca.gov).